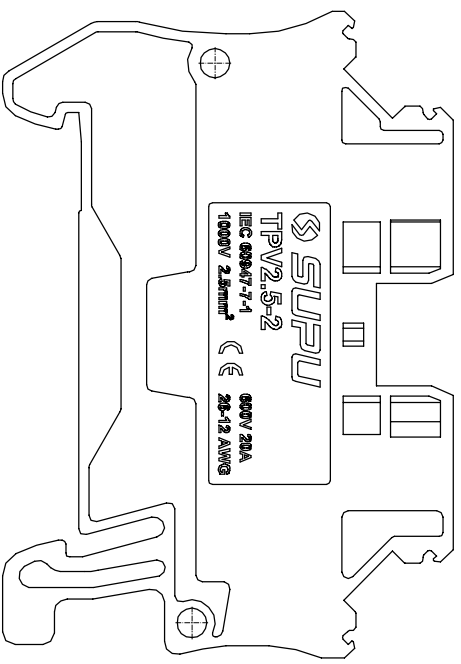
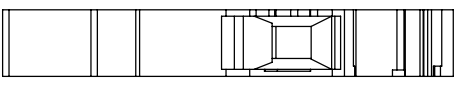
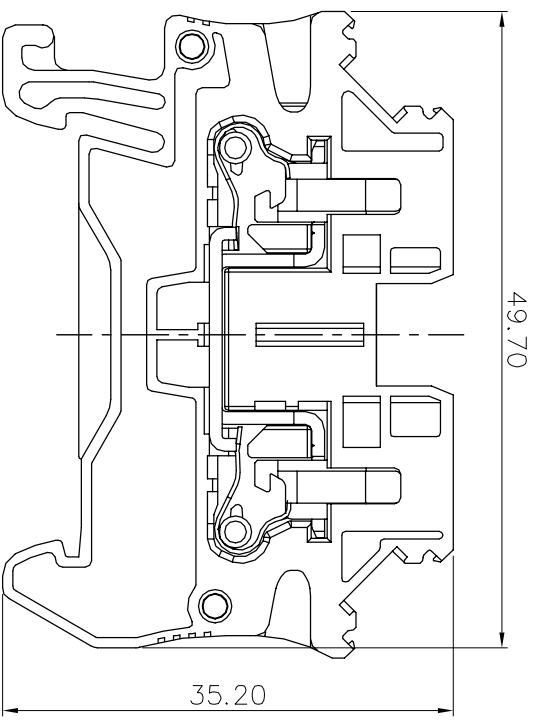
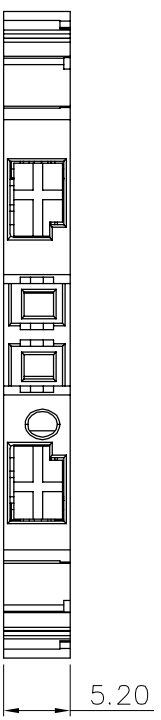


REVISION RECORD			
REV	ECN	DESCRIPTION	DRFT DATE



Transmittal, reproduction, dissemination and/or editing of this document as well as utilization of its contents and communication thereof to others without express authorization are prohibited.

未经允许禁止传输、复制、编辑该文档，以及利用其内容进行交流

- Connection method:
- For Solid wire, peeling wire in right length, push down the wire.
 - For stranded wire, peeling wire in right length, push down the key & fix the wire, or wire furred and fix them.

NOTES:
UL/CUL Standard
1. Conductor cross section : 26~12AWG
2. Rated Voltage/Current :

Use group	B	C	D
Rated voltage(V)	600	600	
Rated current(A)	20	20	

IEC Standard

1. Conductor cross section :

Wire range(Solid/Stranded)	0.2-2.5mm ²
Solid	0.2-4mm ²
Stranded	0.2-2.5mm ²
Stranded with ferrules without plastic sleeve	0.2-2.5mm ²
Stranded with ferrules with plastic sleeve	0.2-2.5mm ²

2. Rated Voltage/Current :

Surge voltage category	III
Pollution degree	3
Rated surge voltage(KV)	8
Rated voltage(V)	1000
Rated current(A)	24

Material:

Insulator	PA66	UL94 V-0
Conductor	Copper alloy	Sn plated
Spring	Stainless steel	
Button	PA66	UL94 V-0

General information:

- Dimension shall be interpreted per ASME Y14.5-2009
- Stripping length : 8-10mm
- Operating temperature: -40°C~+105°C
- RoHS Compliance
- Undimensioned Tolerances:

Pitch Range in mm	Nominal Dimension	Range	mm
Over 6	Over 30	Over 60	Over 100
To 10	To 40	To 80	To 150
To 24	To 60	To 100	To 150
±0.15	±0.20	±0.30	±0.50
			±0.70
			±1.00
			±1.30
			±2

HOW TO ORDER:
TPV2.5-2-XX

Series No. Color:
GY: Grey
BU: Blue
OG: Orange

Order No	TPV2.5-2-XX	名称 Name	TPV2.5系列侧面直插式弹簧一进一出接线端子	未注公差 Tolerance	表面 Surface
项目 Item	签字 Signature	图号 Drawing No.	PRL...	版本号 Version Number	VDI21
设计 Design	日期 Date	材料 Material	Notes	Revision Number	重量 Weight
审核 Check	2021.8.25			M0	比例 Scale
工艺 Process	DF				1:1
标准化 Standardization	-				
批准 Approve	LWL	物料号 Item No.			
	2021.8.25				

第1页/共1页 1 of 1
SUPU 宁波速普电子有限公司
NINGBO SUPU ELECTRONICS CO., LTD.